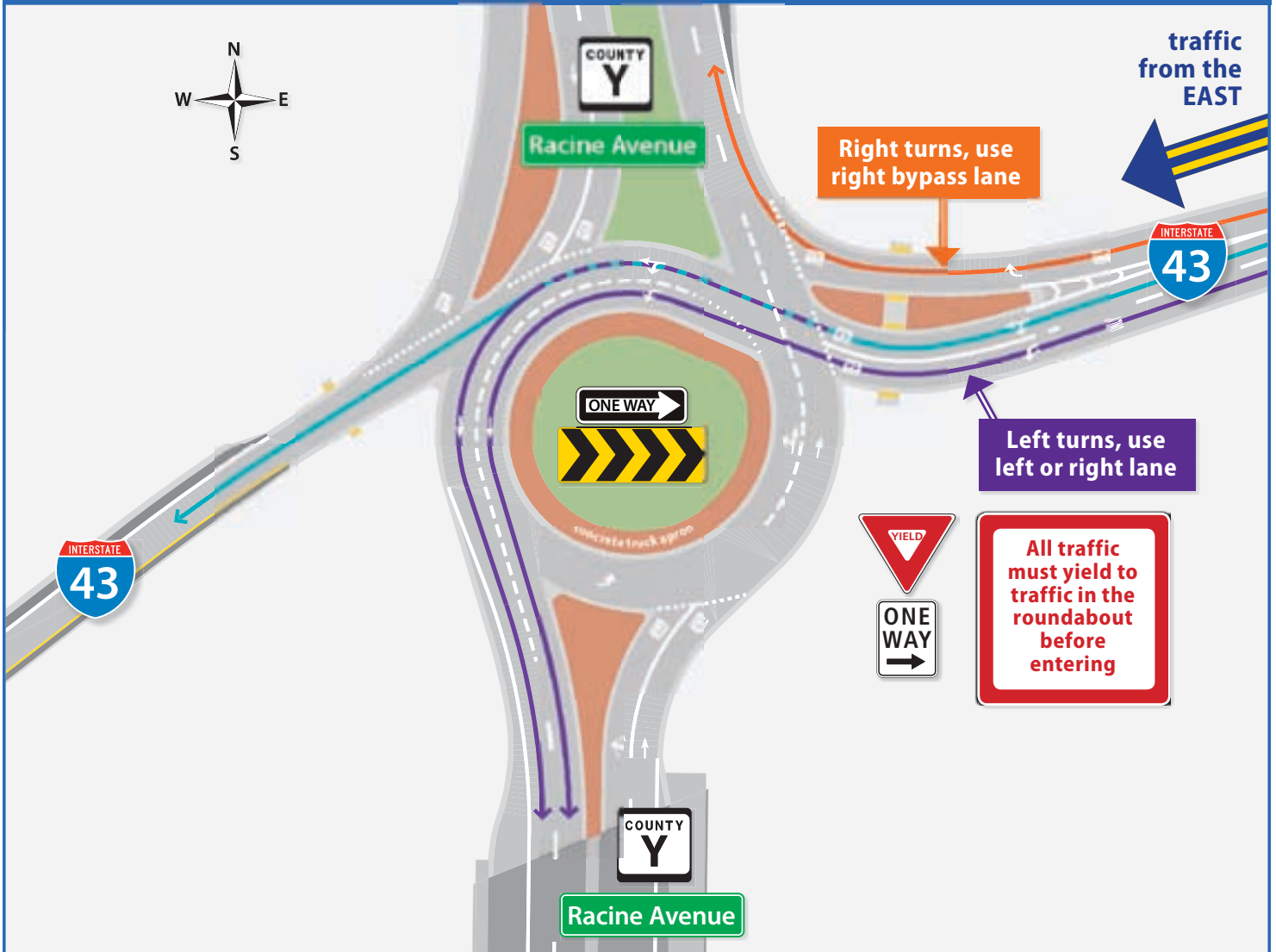


Driving the I-43 west bound off ramp and County Y multi-lane roundabout (from the EAST)



Driving a roundabout

1. Slow down as you approach the roundabout.
2. **Choose the correct lane for your desired destination before reaching the yield line.**
3. Yield to traffic already in the roundabout.
4. Wait for a safe gap in traffic before entering.
5. Once in the roundabout you have the right-of-way.
6. Stay in your lane as you circulate.
7. Signal right to exit.
8. **Do not change lanes!**

Large vehicles

Large vehicles use the circulating lanes and the colored concrete truck apron that borders the inside of the roundabout.

Drivers should be cautious and never drive adjacent to or pass large trucks while approaching and maneuvering through the roundabout.

Emergency vehicles

Always yield to emergency vehicles.

If you have not entered the roundabout, pull over to the right allowing emergency vehicles to pass.

If you have entered the roundabout, *continue to your exit*, then pull over to the right allowing emergency vehicles to pass.

Never stop in the roundabout.