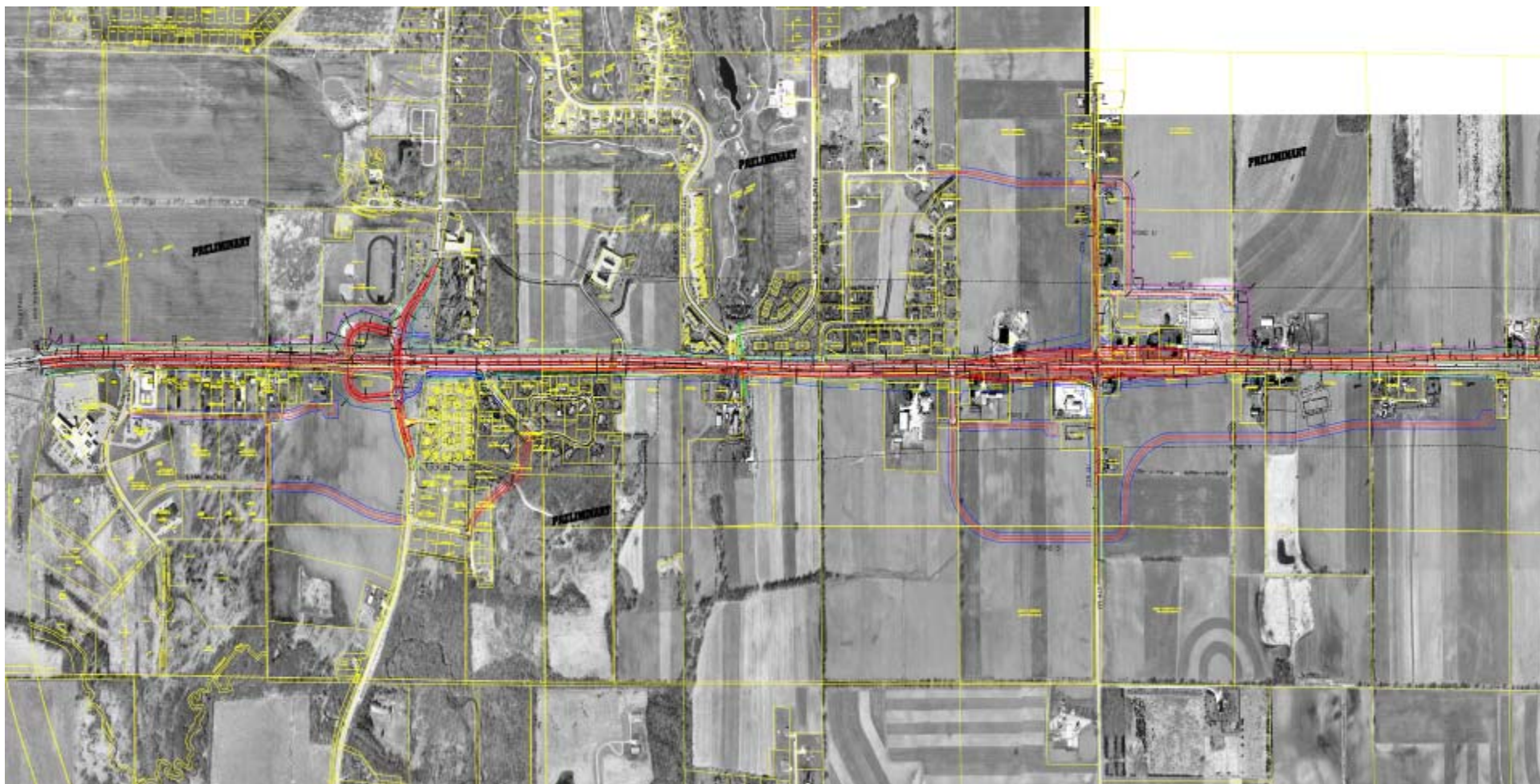




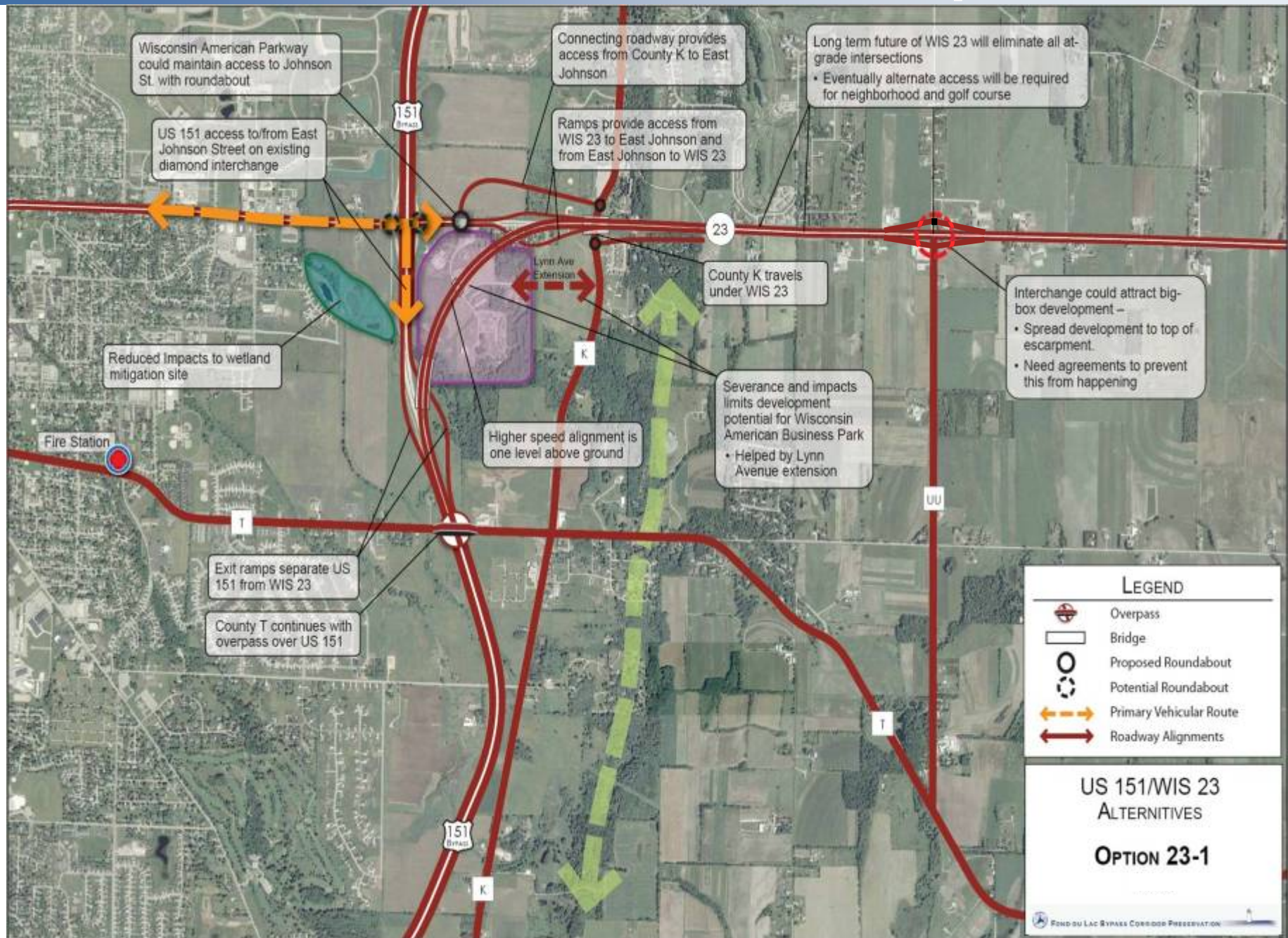
US 151 / WIS 23

**EAST CORRIDOR
ALTERNATIVES**

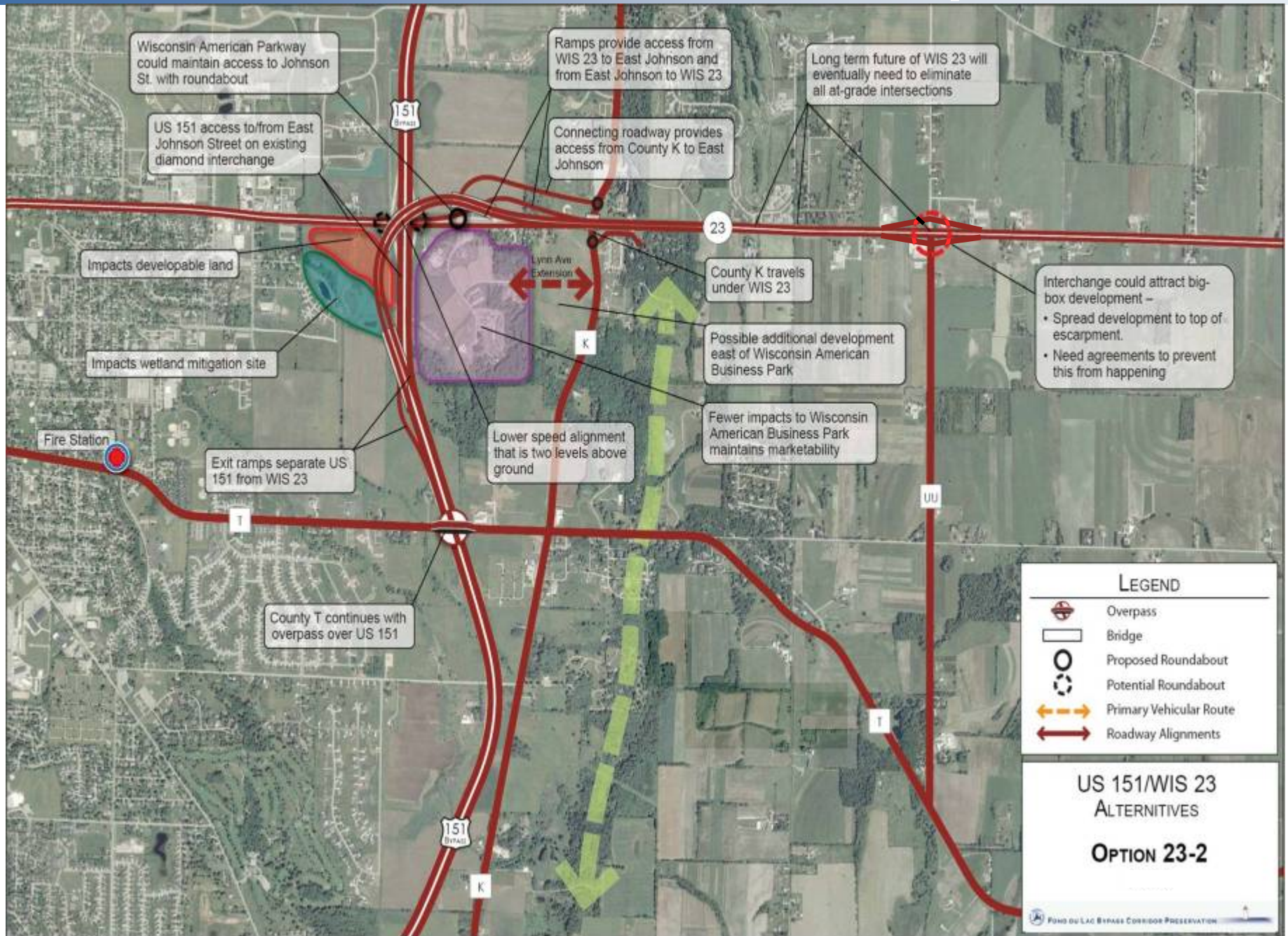
Current WIS 23 Plan (2013-2015)



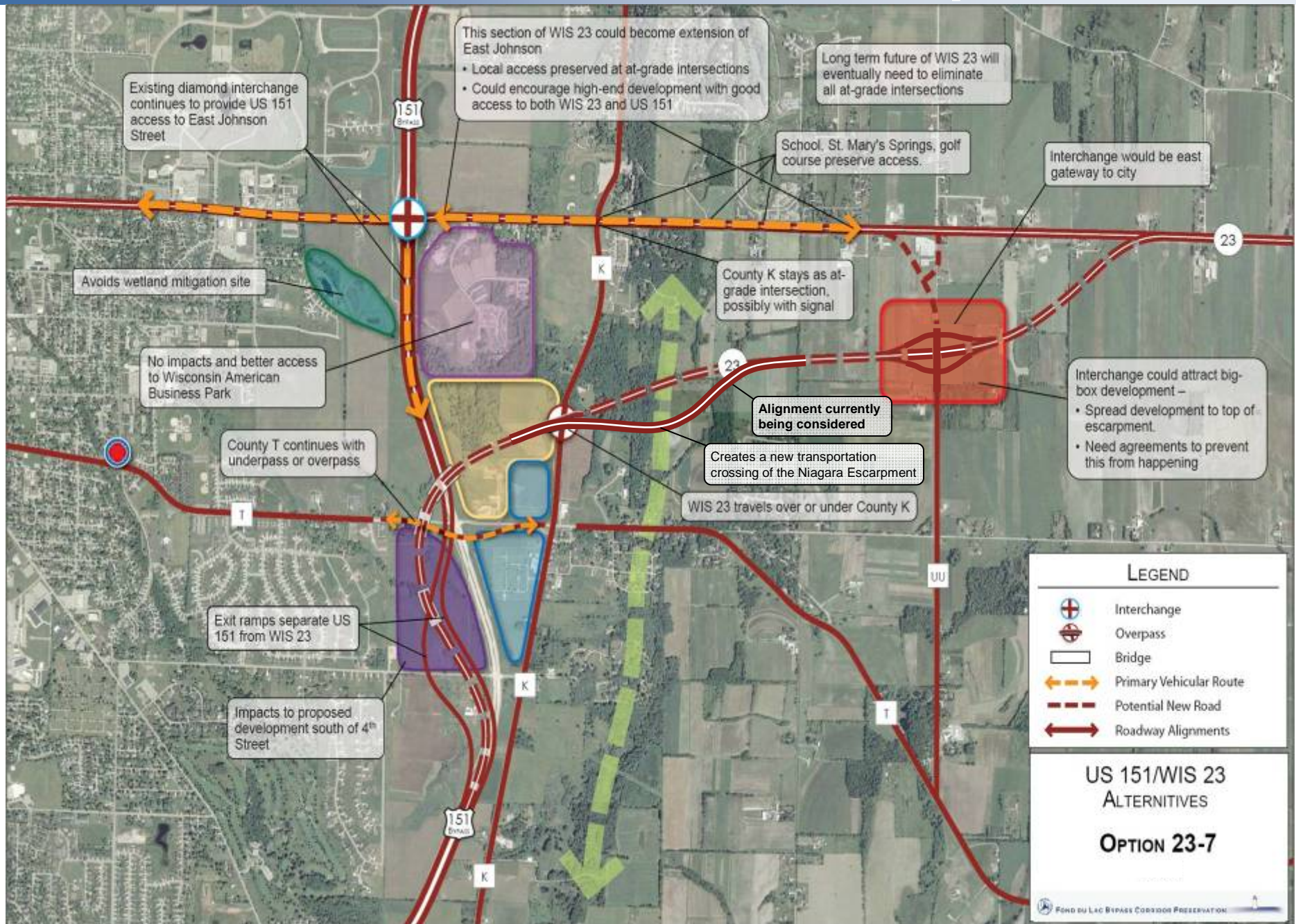
151 US 151/WIS 23 Alternatives – Option 23-1



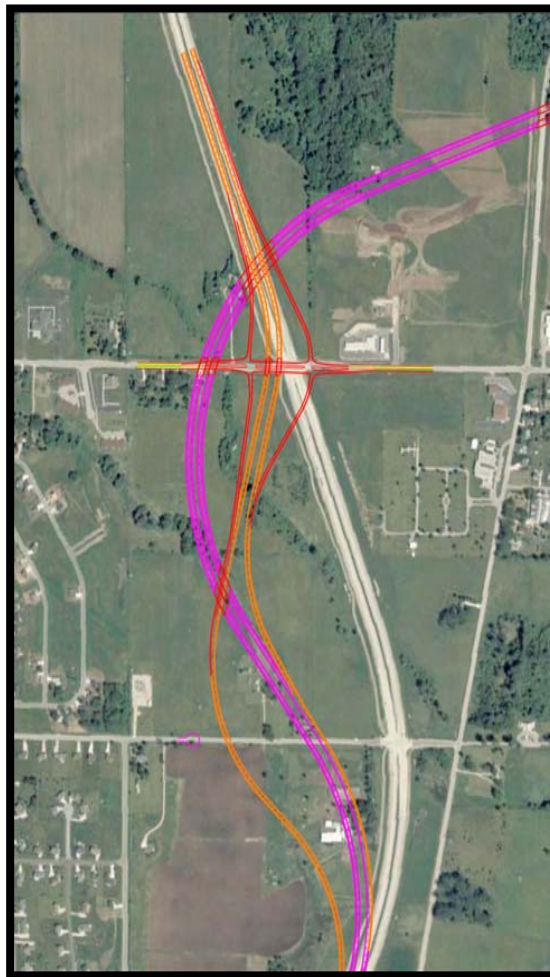
US 151/WIS 23 Alternatives – Option 23-2



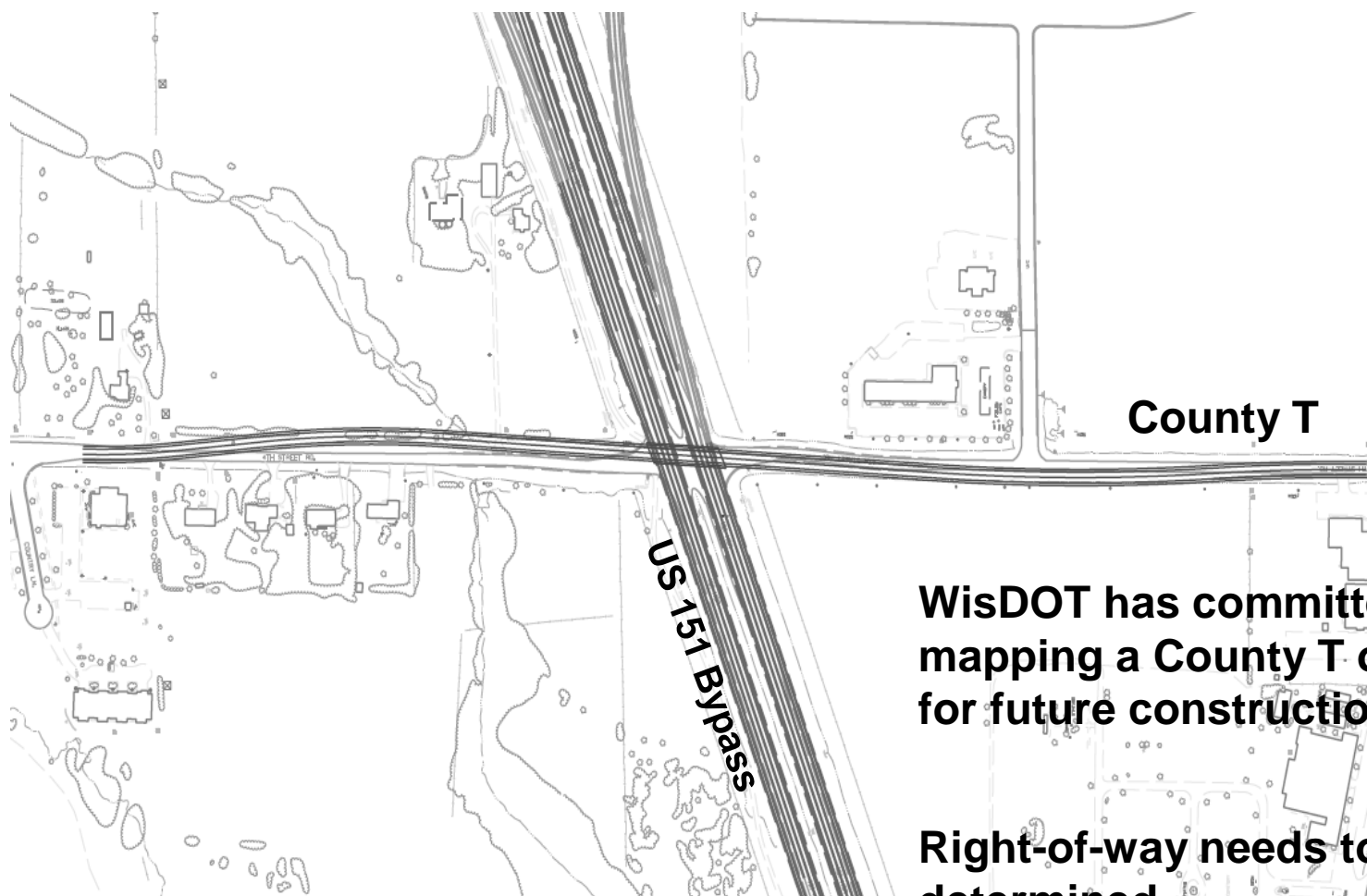
151 US 151/WIS 23 Alternatives – Option 23-7



US 151/WIS 23 Alternatives – Option 23-7 County T Access to US 151 Considerations



County T Overpass



WisDOT has committed to mapping a County T overpass for future construction

Right-of-way needs to be determined